

# KITCHENS

**2018 HOUSE REVIEW THEMES**

**OCTOBER** Pocket Neighborhoods  
**NOVEMBER** Contemporary Designs  
**DECEMBER** Single-Family Homes and Neighborhoods for Rent

The power of the hearth warms and connects rooms throughout the home

By **Larry W. Garnett, FAIBD, House Review Lead Designer**

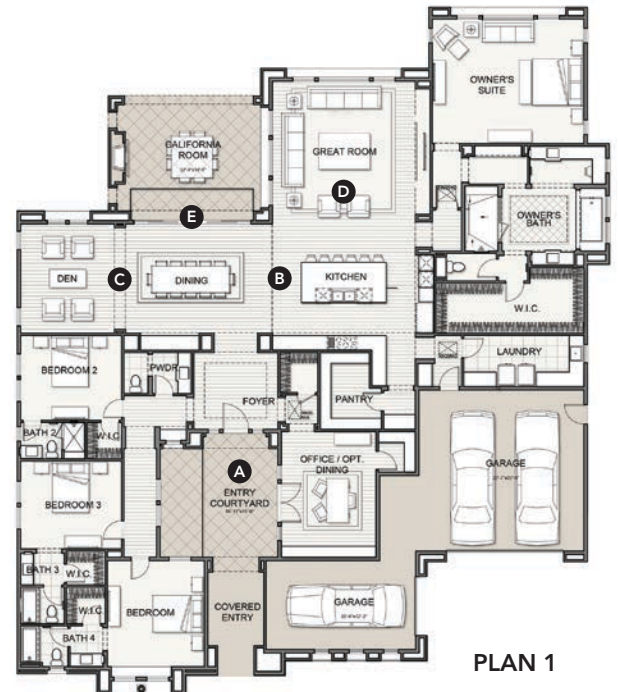
**F**or most of us, the kitchen is considered the most important area in our home. Even for those who don't spend a lot of time preparing and cooking food, the kitchen is still a key place for socializing, entertaining, and gathering.

While there's recently been mention of the "open" kitchen falling out of favor, connecting the kitchen with dining and living areas continues to find enthusiastic acceptance, as does minimalist detail and natural wood or painted cabinet finishes.

Let's face it, no matter where it's located, the kitchen is like a magnet drawing family and friends to it. Ranging from a smaller, narrow-lot design to luxurious high-end custom homes, each of our design team's projects acknowledges the fact that the kitchen is one of the home's most crucial areas.



PLAN 1



PLAN 1

PHOTOS: ERIC FIGGE

**S**ituated on the periphery of a master planned community featuring scenic trails, Artesian Estates is part of a phased plan of oversize one- and two-story single-family homes for the luxury homebuyer that utilizes lot-specific plotting to offer a semi-custom product.

Plan 1 offers a one-story, open floor plan with a gourmet kitchen including a large island at its heart. The den, dining room, California room, and great room seamlessly flow around the kitchen.

Plan 2 enjoys an additional story with a bonus room and two bedrooms, while the first floor lives like a single-story ranch estate with a chef-par kitchen at the center of an open floor plan with connected breakfast, California, and great rooms.

### Plan 1

- A** The private courtyard draws guests into the foyer, opening into the uninterrupted open floor plan
- B** A gourmet kitchen with an island forms the heart of the floor plan
- C** The dining room off the kitchen flows into a spacious den
- D** The great room continues the space from the kitchen
- E** Glass pocket doors span the full length and height of the walls, smoothly connecting the California room to the kitchen, dining room, and great room

### Plan 2

- A** The foyer leads into the chef-par kitchen, illuminated by sunlit windows and sliding glass doors
- B** The kitchen features a butler's pantry
- C** Sizable island with sink
- D** Abundant kitchen counter space and extra storage
- E** An adjacent dining room is right next to the butler's pantry
- F** A breakfast area, California room, and great room flow smoothly around the kitchen

## ARTESIAN ESTATES

### ARCHITECT

Dahlin Group Architecture |  
 Planning  
[marketing@dahlingroup.com](mailto:marketing@dahlingroup.com)  
[dahlingroup.com](http://dahlingroup.com)  
 925.251.7200

### PLAN SIZE

#### Plan 1

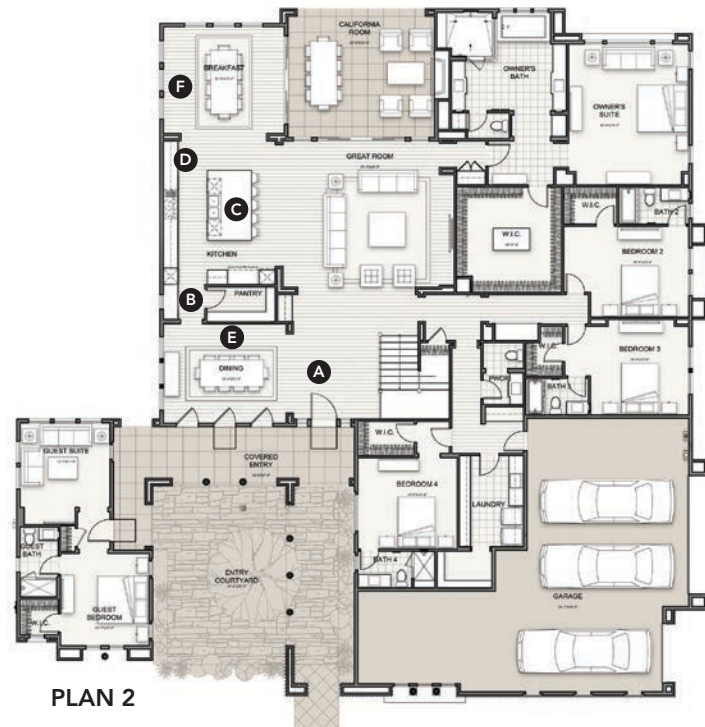
Width: 81 feet  
 Depth: 94 feet  
 Living area: 4,502 sf

#### Plan 2

Width: 94 feet  
 Depth: 93 feet  
 Living area: 6,060 sf



PLAN 2



PLAN 2

[HOUSE REVIEW]

FAYE

ARCHITECT

TK Design & Associates  
Todd Hallett, AIA  
tkhomedesign.com  
248.446.1960

PLAN SIZE

Width: 66 feet, 4 inches  
Depth: 82 feet  
Living area: 3,352 sf

Generally, kitchens are becoming less formal and much simpler than in years past. Clean lines and open vistas dominate the modern kitchen, and delineation between rooms is often achieved through ceiling and flooring treatments.



- A The kitchen is open to the great room, optimizing entertaining space
- B The large barrel-vaulted ceiling steals the show, helping to define the kitchen as its own distinct space
- C The island is simple and large enough for additional seating
- D Large pantry with natural light

[HOUSE REVIEW]

LOTTERY HOUSE

DESIGNER

DTJ Designs  
Seth Hart  
shart@dtjdesign.com  
303.443.7533

PLAN SIZE

Width: 47 feet  
Depth: 100 feet  
Living area: 5,320 sf

This project was designed as a show home and grand prize in an annual lottery event for charity. As a show home, demonstrating luxurious living and contemporary design was a must. The multifunctional island serves as a gathering space for entertaining and a prep area for cooking, as well as an informal breakfast nook. The gray and white color scheme with the added rich accents of natural wood make this space feel sleek and modern but still comfortable and inviting. The range wall floats in front of a wine cellar, prep kitchen, walk-in pantry, and tech niche that all serve as a massive extension of the kitchen.



- A Large L-shaped island with a versatile, multifunctional design serves as a focal point
- B Refrigerator integrated into the cabinets offers a clean, contemporary look
- C Sizable wine room
- D Prep kitchen provides clutter-free entertaining in the kitchen and has direct access from the owner's entry
- E Walk-in pantry provides ample storage
- F Tech niche serves as a great drop zone between the owner's entry and the kitchen

## [HOUSE REVIEW]

### PEAK I AT 5390

#### DESIGNER

KGA Studio Architects  
John Guilliams  
jguilliams@kgarch.com  
kgarch.com  
303.442.5882

#### PLAN SIZE

Width: 21 feet  
Depth: 48 feet  
Living area: 2,354 sf



**G**alley kitchens are not what they used to be. The term “galley kitchen” often conjures visions of dark, cramped kitchens with limited counter space and barely enough room for one person to comfortably cook. Today’s galley kitchen is different. Driven by density and the need to create more affordable homes, lot sizes are becoming smaller and home footprints are shrinking accordingly. Efficiency is key in designing narrow product, and the reimagined galley kitchen is a perfect fit for narrow spaces.



- A** Keeping the space open on both sides avoids the dark, cramped feel of a typical galley kitchen while creating an open floor plan
- B** The large, walk-around island creates the roomy feeling normally associated with bigger homes and provides necessary added counter space
- C** Thanks to advances in pre-manufactured cabinets, what was previously considered limited space can now convey luxury in use and appearance



## [HOUSE REVIEW]

### 1911 COACH HOUSE

#### DESIGNER

Jennifer Gilmer Kitchen  
& Bath  
Meghan Browne  
info@gilmerkitchens.com  
301.657.2500

#### PLAN SIZE

Width: 15 feet, 7 inches  
Depth: 23 feet  
Living area: 1,400 sf

- A** The home was originally built in 1911 as a coach house
- B** The kitchen design was inspired by the homeowner's antiques from around the world
- C** Painted-glass backsplash
- D** A custom waterfall countertop surrounds a restored antique Chinese cabinet to create the kitchen island



This home in Washington, D.C.'s Dupont Circle neighborhood was originally built in 1911 as a coach house, and its eclectic past offers the perfect vehicle for displaying the homeowner's antiques from all over the world. The paneled refrigerator and base cabinets were painted a custom red with black glaze and light distressing, inspired by the homeowner's heirloom Chinese furniture. The warm-yellow painted glass backsplash was a custom choice based on the client's travels to Morocco. The island counter is a deep blue, and the cabinets are a charcoal gray, drawing on the industrial aesthetic of the home. A custom waterfall countertop surrounds the repurposed antique Chinese cabinet that offers additional storage and was strategically placed at the end of the island to set the tone for the entire room immediately upon entering the space.

