

TOP 100 PRODUCTS

By Professional Builder Staff

Home builders know better than almost anyone that trying a new product is not a casual matter. Using a good new product won't necessarily win you props, praise, repeat business, and glowing online reviews. On the other hand, using a bad one can result in unhappy clients, damage to your hard-earned reputation, lost profits, and more.

Throughout the year, our New Products department keeps you informed on new releases, innovations, and developments, from doors to drains, HVAC to housewrap, and sinks to siding. While it's interesting to us, the work that goes into product coverage is about what you tell us would be interesting to you. And so, on the pages that follow, based on response and inquiry, are the products that appeared in these pages that you, the readers, most wanted to know more about. While trying a new product may not be for the faint of heart, what better way is there to learn what's new and worthwhile than seeing what prompted the strongest interest from colleagues and peers?

This year's Top 100 Products are grouped into these eight categories:

INTERIOR PRODUCTS

EXTERIOR PRODUCTS

WINDOWS & DOORS

KITCHEN & BATH

OUTDOOR LIVING

STRUCTURAL / INSULATION / HOUSEWRAP

MECHANICAL / ELECTRICAL / HOME TECH

TOOLS / EQUIPMENT / VEHICLES



DIRECT-VENT GAS FIREPLACE HEAT & GLO

Combining the modern design style sought by homebuyers with the unique installation applications that builders need, Heat & Glo's REVO

Direct Vent gas fireplaces simply hang on the wall or are recessed in-wall, saving space and eliminating the need for a chase. The contemporary series can be installed during any stage of building and in a single trip. Once a hole is made in the wall for the 7-inch-deep unit and the SLP venting pipe is set, the lightweight unit is hung on mounting brackets. The REVO Series fireplaces produce heat output up to 24,000 Btu and come in square, horizontal, or vertical models, with multiple front and panel finish options and optional LED backlighting. **For more info circle 851**



VENTLESS DRYER / WHIRLPOOL

The Hybrid Heat Pump technology in the ventless Whirlpool HybridCare clothes dryer gives builders and designers the flexibility to place dryers virtually anywhere in the home. And, because it repurposes energy during the drying cycle, the HybridCare dryer uses less energy. Its Advanced Moisture Sensing—

with three modes: Speed, Eco, and Balanced—provides optimal drying results and helps to prevent damage caused by overdrying. **For more info circle 852**



PROFESSIONAL SERVICES CLOSETMAID

The maker of wood, ventilated wire, and mixed closet and storage systems also offers a

comprehensive resource to help builders simplify the design, sale, ordering, and installation of ClosetMaid products. A ClosetMaid Professional Service representative can assist with design, selection, and scheduling installation through the company's installing dealer network. The reps also provide product line and point-of-sale collateral support for showrooms and model homes. **For more info circle 853**



LIGHTING / ACCESS LIGHTING

Access Lighting offers customized LED and fluorescent luminaires and focuses on providing trending contemporary designs with the latest energy-efficient technology at competitive prices. The 25-year-old contemporary lighting manufacturer moved this year to Irvine, Calif., into a new facility with modern assembly and modification lines, a bigger warehouse, and an on-site showroom. Access sells its state-of-the-art products through online dealers and distributors nationwide. **For more info circle 854**



PAINTS AND COATINGS / BENJAMIN MOORE

The Corotech line of more than 40 paints, primers, and coatings made by Complementary Coatings, a Benjamin Moore company, includes high-performance epoxies formulated for one-coat application on interior concrete floors. Corotech's floor coatings provide superior chemical, abrasion, and impact resistance for industrial and commercial applications. The company also makes waterproofing sealers for concrete blocks and masonry. **For more info circle 855**



SOLID WOOD AND ENGINEERED FLOORING COUNTRY WOOD FLOORING

With a selection of engineered and solid wood flooring—hardwood species include oak (shown), maple, and birch, as well as exotic woods such as cumaru (Brazilian teak) and mahogany—Country Wood Flooring offers wire-brushed and oil-finished planks to emphasize the natural depth and character of the materials used. Five Country Wood collections are available and include more than 100 choices of colors and styles. **For more info circle 856**



CORK BRICKS / SUSTAINABLE MATERIALS

Cork Bricks from Sustainable Materials are three-dimensional pieces of renewable cork bark that are imported from Portugal and are available in three sizes and thicknesses. These interior wall décor bricks are pre-finished; come in six natural, neutral colors; and are made from naturally harvested and rapidly renewable cork. The bricks offer more than just aesthetic appeal, as they also reduce noise, can be used as a push-pin board, and have self-adhesive backing for easy peel-and-stick installation. **For more info circle 857**



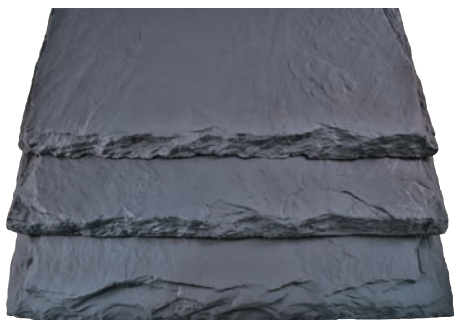
PAINTS & COATINGS / SHERWIN-WILLIAMS

Sherwin-Williams is a 150-year-old manufacturer and distributor of paint and coating products under such brands as Sherwin-Williams, Dutch Boy, Krylon, Minwax, Thompson's Water Seal, and many others. The company's eponymous brand is exclusively sold through more than 4,600 neighborhood stores and facilities in North America, while its other products are available at leading mass merchandisers, home centers, and independent dealers, retailers, and distributors. Sherwin-Williams' newer products include Super Deck, a deck-care finishing system; Paint Shield, an EPA-registered microbicial paint; and the ColorSnap integrated color selection system (shown). **For more info circle 858**



MOSAIC TILE / NEW RAVENNA

New Ravenna's Sea Glass collection, designed by Sara Baldwin, offers mosaics made in the U.S. hand-cut and assembled by artisans in Virginia. Each mosaic is a custom creation made to fit a specific installation. There are eight mosaic designs, with patterns available in multiple colors and tones inspired by nature. The designs can be created in any of New Ravenna's 70-plus colors of glass and installed on either vertical or horizontal surfaces, both indoors and out. **For more info circle 859**



▲ SYNTHETIC SLATE / DAVINCI ROOFSCAPES

This line of synthetic slate roofing materials offers the beauty of natural slate without its shortcomings. At one-half the cost of installed natural slate, DaVinci's durable slate roofing is economical as well as lightweight, freeze/thaw resistant, Class A fire-rated, Class 4 impact-rated, and wind resistant to 110 mph. The tiles are available in Multi-Width Slate (12, 10, 9, 7, and 6 inches wide), Single-Width Slate, and the Bellaforte line in a 12-inch width. The low-maintenance tiles resist algae and moss growth and come in 50 standard colors. **For more info circle 860**



▲ STONE VENEER PANELS / BORAL

Versetta Stone, a panelized nonstructural, cement-based manufactured stone veneer from Boral, offers the look of traditional stone masonry but at a lower cost and with less installation time. The lightweight aggregate materials make Versetta Stone one-fourth the weight of full-thickness stone. Panels install with nails or screws and have an integrated moisture management system. No additional support footings are needed, and there is no need to paint, coat, or seal. Versetta Stone comes in two cuts, ledgerstone and tight-cut, and five colors, including two new hues: Graphite (dark gray) and Mission Point (light gray). **For more info circle 861**



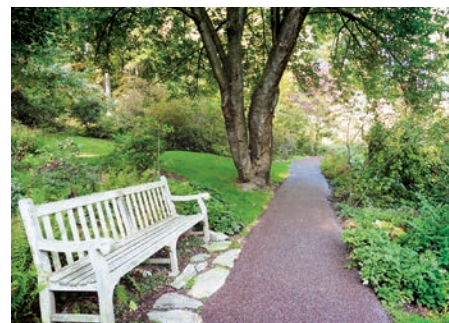
▲ CULTURED STONE VENEER / BORAL

Cultured Stone by Boral wall veneers are designed to mimic the look of natural stone, yet actually improve upon it with a more consistent color, quality, and weight. Durable, sustainable, and performance-focused, the product is almost completely maintenance-free, the company says, and only needs occasional light washing to remove dust and dirt. No painting, coating, or sealing is required. The veneers contain 54 percent pre-consumer waste-stream material. All Cultured Stone by Boral veneer products are backed by a 50-year limited warranty, and the product is engineered to meet or exceed specifications for all major code approvals. **For more info circle 862**



▲ EXTERIOR PRODUCTS / PLY GEM

Whether it is siding and accessories, windows and doors, trim and molding, stone veneer, or roofing, Ply Gem's portfolio of brands offers builders a huge selection of exterior building product solutions. With over 8,000 trained associates across the country, Ply Gem, and its large portfolio of products, provides almost anything a builder, remodeler, or architect may need to create low-maintenance and energy-efficient homes. **For more info circle 863**



▲ PERMEABLE PAVING / POROUS PAVE

Porous Pave manufactures porous, durable, and flexible surfacing material made from recycled rubber, aggregate, and a binder to produce ¼-inch nominal size rubber chips. The surfacing is engineered with 29 percent void space, so water permeates down into a compacted aggregate base before slowly filtering into the ground. The paving can be used on driveways, sidewalks, patios, pool surrounds, and terraces, and can be installed on slopes up to 30 degrees. Using the recycled rubber from more than 200,000 tires, the company has manufactured and installed a total of 6 million pounds of permeable paving materials. **For more info circle 864**



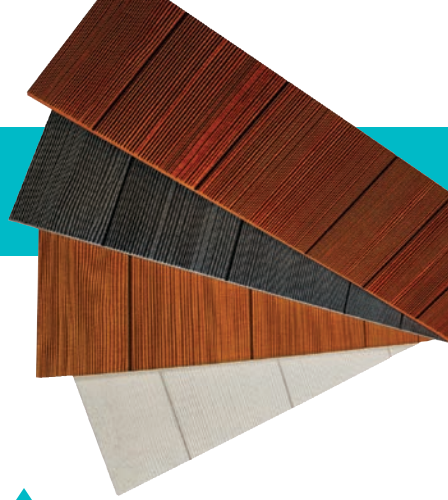
▲ PVC TRIMBOARD / TAPCO

Made from cellular PVC, Klear PVC Trimboard, a product from the Tapco Group's Klear Trimboard division, is available with Klear's innovative TruEdge. TruEdge features sealed edges that resist stains from dust and dirt and provides a smoother finish than wood or other PVC boards. It also has UV inhibitors to protect it from the elements over time. **For more info circle 865**



▲ SHAKE & SHINGLES / TAPCO

Grayne composite siding offers the look of aged cedar with a weather-resistant surface that doesn't absorb moisture. Produced from the same cutting process used for making cedar shingles, Grayne, from Tapco, can be used to replace or complement fiber cement or engineered wood siding. The plain sawn shingle profile features realistic grain patterns. Natural wood grain textures are visible on all surfaces. The color palette consists of six pre-finished cedar colors, including Lakeside Blue, Aspen Brown, and Ridge Moss. **For more info circle 866**



▲ FIBER-CEMENT SHAKES / NICHIIHA

At ½ inch thick, Nichiha manufactures what it claims is the thickest fiber-cement shake available. Made from sustainable materials such as FSC wood pulp and fly ash, Sierra Premium shakes feature depths and shadows that look like real wood shake. Nichiha coated the shakes with sealer and primer and partnered with PPG to apply a sandstone basecoat and two coats of PPG's semi-transparent finish to deliver deep, rich colors and protection from the elements. Sierra Premium is guaranteed not to rot, warp, delaminate or fall victim to pests, and the finish is covered by a 15-year limited warranty. Available colors include Terra, Shadow, Hazelnut, and Primed. **For more info circle 867**



▲ INSTALLATION SOLUTIONS ENVIRONMENTAL STONWORKS

From manufacturing to installation, Environmental StoneWorks provides a start-to-finish approach to help home builders create exactly what they envisioned. With a team of project managers that oversees the entire job, field support meant to improve and maintain communication, and safety programs to reduce risks as much as possible, all aspects of the stone veneers are managed under one roof, streamlining the entire process. Environmental StoneWorks products are available nationwide through quality building material retailers. **For more info circle 868**



▲ EXTERIOR PRODUCTS / MID-AMERICA

Mid-America, a Tapco Group brand, offers a large selection of exterior products including shutters, window and door trim, mount blocks, utility and siding vents, gable vents, and roof ventilation in a wide range of sizes, colors, and architectural styles. Mid-America products are impervious to moisture and insects, do not require painting, and are made in the U.S. **For more info circle 869**



▲ WASTEWATER TREATMENT / BIO-MICROBICS

The BioBarrier Membrane Bioreactor wastewater treatment system treats blackwater and graywater through the use of a membrane process of microfiltration and ultrafiltration with a suspended growth bioreactor. Micro-size pores in the durable flat membranes separate solids from the wastewater. Completely automated, the system requires no backwash functionality and is ideal for environmentally sensitive areas and water reuse applications. **For more info circle 870**



▲ **FIBER-CEMENT SIDING AND TRIM**
JAMES HARDIE

James Hardie makes fiber-cement siding and trim that's engineered to withstand the specific climate in which the product is used. Customers are matched with the right product for their region through the HardieZone system. All products are primed and ready for field painting, but builders can also opt to order siding and trim treated with ColorPlus Technology, which adds a durable finish that's covered by a 15-year limited warranty protecting against peeling, cracking, and chipping. **For more info circle 871**



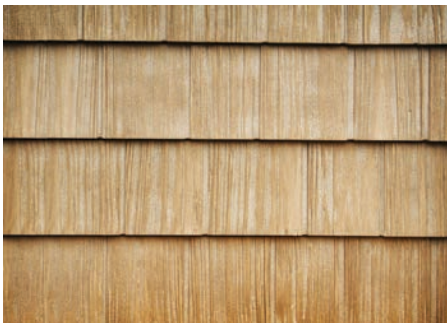
▲ **METAL ROOFING / CERTAINTEED**

Presidio is a metal roofing line from CertainTeed that replicates the appearance of slate, clay tile, and wood shake roofing. The Energy Star-qualified material is manufactured with up to 50 percent recycled material and is 100 percent recyclable when ultimately removed due to renovation or demolition. Presidio is made with durable, deep draw steel to achieve weather resistance, solar reflection, and noise reduction and its fade-resistant surface with a patented anti-corrosive coating can decrease the amount of heat transferred into a house. **For more info circle 872**



▲ **MARBLE OVERLAY / ARRISCRAFT**

Adair Marble Overlay from Arriscraft lets architects and builders incorporate quarried limestone into both interior and exterior settings. The product is adhered to a suitable solid substrate and installed with dry joints with no mortar. The thin, easy-to-install limestone units create a dry-stack design that can be laid in horizontal or vertical patterns, and the lengths are randomized to allow for more custom designs. Adair Marble Overlay's variations in color and pattern add to its unique character. **For more info circle 873**



▲ **VINYL SHAKE SIDING / FOUNDRY**

Split Shake is Foundry Specialty Siding's most popular vinyl cedar shake siding. A Tapco Group division, Foundry makes its shakes from multiple molds of genuine cedar to achieve a warm, authentic look with random grooves and grain. The deep texture also creates a captivating contrast between light and shadow. Split Shake is available in 7-inch exposure and comes in 23 colors, which hold their hues thanks to a durable ASA cap that protects against ultraviolet rays and the elements. **For more info circle 874**



◀ **COLUMNS / PLY GEM**

Designed as an architectural feature for applications including fence and railing accents, the Column Collection from Ply Gem Stone allows builders and contractors to add curb appeal and character to a house. Columns are molded from a Civil War-era ledgestone fence and then hand-painted. No mortar is required. The Column Collection is similar to quarried stone with an authentic, variegated design. It comes in two colors: the natural-looking Canyon (shown), and Mystic, a dark gray that fits modern designs. **For more info circle 875**



▲ **MANUFACTURED STONE / PROVIA**

ProVia has added two product lines to its Heritage Stone manufactured stone collection. The first, Heritage Natural Cut Stone (shown) has fossilization features and color variations that reflect those found in nature. It is available in three colors: Woodbridge, Fernwood, and Ashworth. The second is Heritage PrecisionFit Stone Panels, which attach for a precise fit and quick installation, with irregular edges and dynamic patterns in a stacked-stone look. Available colors are Sage Grey, Adobe Sands, and Driftwood. **For more info circle 876**



MULTI-SLIDE DOOR MARVIN WINDOWS AND DOORS

Homeowners can now bring the outside in with the Ultimate Multi-Slide Door from Marvin Windows and Doors. Available in multiple configurations and sizes to fit a variety of different openings, Ultimate Multi-Slide Door panels come in standard widths of 3 feet to 5 feet and heights of 7 feet to 12 feet. When opened, the panels stack in front of one another. A unidirectional configuration or the bi-parting style, which opens from the center, can be selected, and each configuration is available in both left- and right-handed styles. **For more info circle 877**



90-DEGREE MULTI-SLIDE DOOR WESTERN WINDOW SYSTEMS

The Series 3600 90-Degree Vinyl Multi-Slide Door brings a unique indoor-outdoor solution to production builders via its volume program, and a 10-day production lead time helps keep projects on track and on budget. The 90-Degree Vinyl Multi-Slide Door is U.S.-made of 100 percent virgin vinyl and recyclable aluminum and is engineered for a 90-degree, no-post configuration. Features include a low 0.30 U-factor; 0.20 SHGC; and dual-pane, argon-filled, low-E glass. A flush sill option provides a seamless transition to the outdoors. Rolling panels can be stacked at the opening or slid away into pockets. Custom sizes allow for added design flexibility. **For more info circle 878**



VOLUME PROGRAM WESTERN WINDOW SYSTEMS

The company has expanded its Volume Program to include custom sizes and configurations, with a rapid 15-day production lead time, offering home builders more design flexibility. The Volume Program's customizable options are available with the company's Series 600 Aluminum Multi-Slide Door, Series 9500 Bi-Fold Door, and Series 3600 Vinyl Multi-Slide Door. Additional features include heavy-duty stainless steel hardware and a variety of material and finish options. All products are manufactured at the company's headquarters in Phoenix. **For more info circle 879**



RETRACTABLE SCREEN DOOR ODL

The EZ-Glide Control System used on the Brisa Retractable Screen Door by ODL allows for smooth opening and closing while a small locking latch

ensures safety and security. The door installs quickly and maximizes outdoor views. The outer-face mount design optimizes door width, fitting most sizes 32 to 36 inches. The screen can also be customized to fit smaller door sizes between 28 and 31½ inches with two easy-to-make cuts. To prevent walk-through, the door includes subtle stripes woven into the screen and uses durable, long-lasting surfaces and rust-free aluminum housing. The door is also available in out-swing, in-swing, and sliding door variations. **For more info circle 880**



WINDOW SYSTEM VITROCSA USA

A dual-glazed, thermally broken

window system from Vitrocsa, the inventor of the sliding glass wall, completely conceals the sills and frames in the floor and walls, allowing the glazing to span from floor to ceiling. In fact, the 7/8 vertical jambs are the only evidence of a sliding system. Made from U.S.-manufactured aluminum profiles and glass, the Pure window system is available in sliding or fixed units. The special curtain wall system comes with a patented ultra-flush threshold, which provides an obstacle-free indoor-outdoor experience. **For more info circle 881**



FIBERGLASS EXTERIOR DOORS JELD-WEN

The manufacturer's fiberglass exterior doors are offered via three separate product lines—

Architectural, Smooth-Pro, and Design-Pro—that all provide an authentic woodgrain look, decorative glass designs, and increased energy efficiency, offering an array of options to fit any style or budget. Additionally, the doors come in a smooth finish that is ready to paint or stain, or a Direct Glaze option can be selected for a more contemporary look. The doors offer a long lifespan while remaining low-maintenance. **For more info circle 882**



VINYL MULTI-SLIDE DOOR WESTERN WINDOW SYSTEMS

Featuring dual-pane, low-E glass that helps reduce solar heat gain, the Western Window Systems Series 3600 Vinyl Multi-Slide Door is made from cold-formed steel with a rating of 50 kilopounds per square inch. Options include a flush sill, retractable screens, and rolling panels.

For more info circle 883



SPECIALTY DOORS / SIERRA PACIFIC WINDOWS

Of the specialty doors offered by Sierra Pacific Windows, lift-and-slide doors, multi-slide pocketing doors, multi-slide stacking doors, and bifold doors are four options of large-opening doors that make walls disappear. Lift-and-slide doors glide open large expanses of door panels while maintaining maximum energy efficiency. Multi-slide pocketing doors disappear into a pocket on one or both sides of the opening, while multi-slide stacking doors create moving walls of wood or wood-clad glass panels that stack on one or both sides of an opening. The multi-slide stacking doors can also be released from the stationary position, allowing the panels to be stacked anywhere along the track. Bifold doors can stack either to one or both sides to incorporate minimal panel stack, which further enhances the clear opening space. **For more info circle 886**



DOORS / LA CANTINA DOORS

Whether they fold, slide, or swing open, LaCantina Doors has a wide array of doors suitable for projects ranging from single-family and multifamily residential construction to restaurant and retail projects. LaCantina folding doors use high-quality rolling hardware and robust panel and frame designs to provide smooth, effortless operation for any size opening. The company's sliding doors have been engineered to the demands of a folding system and use clean, minimal designs and exceed industry standards for air and water structural testing. LaCantina swing doors use heavy-duty stainless steel hinges and strong door panels engineered for taller, wider openings to create more space than typical single and French doors.

For more info circle 884



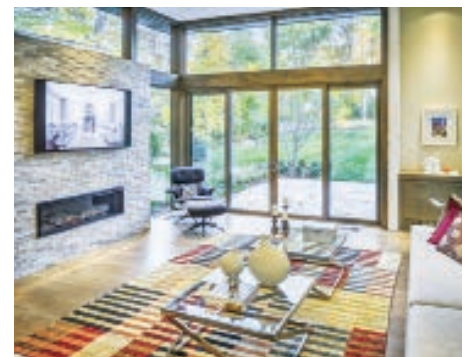
TOP-HINGED ROOF WINDOW / VELUX

Velux's GPL roof window allows you to admit daylight and fresh air to spaces such as lofts and attics while also maximizing outdoor views. When closed, the window still allows for fresh air circulation via its ventilation flap. A rotating sash allows easy access for cleaning the glass from the inside, and the bottom latch of the window opens to a 45-degree angle for emergency escape and rescue. The GPL roof window is ideal for any room requiring that windows be placed in a low position. **For more info circle 887**



WINDOWS AND DOORS WINDSOR WINDOWS & DOORS

With thousands of product possibilities, Windsor Windows & Doors helps create one-of-a-kind homes that allow builders to realize their vision and meet homeowners' needs. Whether it's aluminum, wood, cellular PVC, or vinyl windows and doors, Windsor products offer high-performance glass, a range of colors, and stylish hardware. **For more info circle 885**



MODERN-LOOK WINDOWS WEATHER SHIELD

Styled with a narrow-profile frame and sash, square glazing bead, and custom-designed hardware, Weather Shield's Contemporary Collection of windows and doors meets the needs of modern architecture. The full line includes casements, awnings, pictures, and sliding and hinged doors featuring low-maintenance extruded aluminum exteriors with anodized or AAMA 2605 performance finishes for long-lasting color. Enhanced frame and glazing systems maximize energy savings. **For more info circle 888**



HIGH-QUALITY SERVICE TIMBERLAKE CABINETRY

Timberlake Cabinetry offers everything from custom-built cabinets to more budget-conscious options, but its service is standard across the board. The company's smooth delivery process progresses from the design and quote phase through the punch-out and transfer step, which entails an inspection from a Timberlake representative. Sales reps, builder service reps, designers, field supervisors, and service technicians are located around the country, and Timberlake monitors blueprints, paperwork, and schedules through the Maestro custom software system. **For more info circle 889**



LINEAR DRAIN / NOBLE CO.

Noble's Freestyle Linear Drain is made from a single piece of plastic (PVC or ABS) with no seams. It allows for a single-slope shower base, versatility of drain location, and uninterrupted installation of large-format tile. The drain features a membrane-clamping mechanism that ensures a watertight connection to the waterproofing membrane. Noble makes the linear drain in six lengths and four brushed stainless strainer styles. **For more info circle 890**



REFRIGERATION / THERMADOR

By mixing and matching refrigerator, freezer, wine, and bottom freezer columns, Culinary Preservation Centers from Thermador offer customization to fit the needs of any home chef or entertainer's kitchen. Each food storage column can be mixed and matched with any other column and can be selected in 18-inch, 24-inch, 30-inch, and 36-inch sizes. Someone who loves to entertain may choose a combination of a 30-inch built-in refrigerator, a 24-inch built-in wine column, and a 30-inch built-in bottom freezer, while an urban family living in a more compact space may opt for a 24-inch built-in refrigerator and an 18-inch built-in freezer. As kitchens become more personalized, Thermador's Culinary Preservation Centers offer builders a unique blend of design freedom and flexibility. **For more info circle 891**



FLOOR-MOUNT TOILET / GEBERIT

The Monolith Floor-Mount Toilet is a slim, attractive alternative to a typical toilet. Designed by Geberit to connect to existing drainage and water supply lines so no structural modifications are required, the Monolith installs quickly and completely into the existing toilet rough-in. Large and small levers offer water-saving dual-flush choices: 1.6 gallons per flush (gpf) for solid waste and 0.8 gpf for liquid waste. Monolith exceeds EPA WaterSense HET flushing performance and North American code approvals. **For more info circle 892**



SHOWER PAN SLOPE / NOBLE CO.

To help builders create the code-required ¼-inch-per-foot slope toward the center under a shower pan liner, Noble Co. makes the Pro-Slope, a preformed composite from durable expanded polystyrene that comes in 40-by-40-inch and 60-by-60-inch sizes and a 40-by-80-inch tub replacement size. Extensions are also available. The product can easily be cut using a utility knife and doesn't require any mortar, mixing, or curing. **For more info circle 893**



▲ POWER-FLUSH TOILET / GERBER

An improved trapway headlines the improvements to the Avalanche, one of Gerber's most popular toilet lines. The new concealed trapway allows improved flushing and cleaning of the toilet bowl and gives the base of the Avalanche family a smooth, sleek look that is easy to clean and maintain. All internal components are Fluidmaster brand, including the premium 540 Series 3-inch flush valve combined with the 400A fill valve. The toilet uses 1.28 gallons per flush and is WaterSense certified. **For more info circle 894**



▲ SHOWER WALL / KOHLER

The Choreograph collection is manufactured from Serica, a durable proprietary material, and enables the family bathroom to be the space that works for everyone by bringing functionality and organization into the shower. Kohler offers a variety of wall panels, storage solutions, and accessories in a range of colors, patterns, and textures to match any décor. The walls can be trimmed on site for custom cuts and installed over tile. The joints of the Choreograph collection leave a minimal seam, making the shower walls easier to clean and maintain. **For more info circle 897**



▲ IN-WALL TOILET SYSTEM / GEBERIT

Low maintenance coupled with water and space savings are the hallmarks of Geberit's In-Wall Tank and Carrier System. The re-engineered Sigma concealed tank for the wall-hung toilets fits within a standard 2x4 or 2x6 wood- or metal-frame wall and has more space, allowing for the tool-free removal of the fill and flush valves behind the decorative flush panel. An adjustable tank height of 15 to 19 inches ensures that anyone will be able to use the fixture, which supports up to 880 pounds. It also offers dual-flush functionality of 1.6 or 0.8 gallons per flush. **For more info circle 895**



▲ FRENCH-DOOR DOUBLE OVEN / VIKING

Just one hand can open the extra large doors of the Viking Professional French-Door Double Oven. The 4.7-cubic-foot oven with 11 modes for cooking versatility is equipped with six porcelain-coated rack positions. It also comes standard with backlit steel knobs, three oven racks (two ball-bearing racks in the top oven and one in the bottom), and twin 8.5-inch bidirectional convection fans. **For more info circle 898**



▲ PROFESSIONAL APPLIANCES / ELECTROLUX

The Frigidaire Professional suite of appliances, which includes a free-standing range, French door refrigerator, and dishwasher, is focused on offering consumers high-quality appliances inspired by restaurant-style kitchens at affordable prices. And, unlike most professional appliances, the Professional suite is compatible with standard-size appliances so they fit into existing kitchens. Styling is characterized by symmetrical lines, heavy-duty knobs and handles, and easy-to-use control panels. The suite uses the company's Smudge-Proof Stainless Steel to resist fingerprints and ensure easy cleaning. **For more info circle 896**



▲ BATH/SHOWER UNIT / STERLING

This bath/shower unit from Sterling, a Kohler company, consists of modular panels connected with Dry-Block seal; no caulk is needed. The entire unit is made of Vikrell, Sterling's exclusive long-lasting, stain- and scratch-resistant material that's easy to clean and won't chip or fade. Offering abundant shelving and a unique channeled water containment system to prevent leaks, the unit's available sizes include 60 by 30 inches and 60 by 32 inches in White or Kohler Biscuit. **For more info circle 899**



OUTDOOR KITCHEN CABINETS / DANVER

Stainless steel construction makes the entire line of Danver's indoor/outdoor kitchen products virtually maintenance-free, the company says. But homeowners need not opt for a strictly stainless steel finish: dozens of finish combinations are available, including custom painted color options and powder-coat painted wood finishes on doors and drawer fronts.

For more info circle 900



HARDSCAPING KEYSTONE RETAINING WALL SYSTEMS

Keystone offers a range of segmental retaining wall products for both structural and landscape use as well as pavers, patio stones, edgers, and capstones and the pins and tools needed for creating distinctive hardscapes. Attractive, functional, and durable, the products are versatile and easy to install. Keystone's landscape wall systems can be used to create small to mid-size gravity retaining walls and outdoor living elements such as kitchens, fireplaces, fire pits, benches, and more. Patio stones and pavers are offered in a wide range of styles, sizes, and textures. For more info circle 901



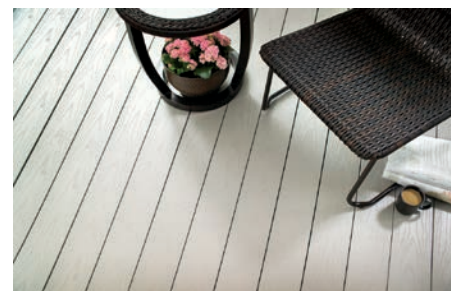
CONCRETE STAIN / QUIKRETE

Transform boring driveways, garage floors, sidewalks, and patios into aesthetically pleasing surfaces through the use of concrete and masonry stains from Quikrete. There are three stain options to choose from, each one offering its own unique look. Etching Stain permanently stains concrete in one step and delivers a marble-like appearance with warm earth tones and unique shading. Penetrating Concrete Stain is a UV-resistant formula that provides an opaque appearance with a deep, rich color highlighted by natural variations in concrete and masonry. Translucent Concrete Stain is a semi-transparent, water-based, polymer-bonded stain that highlights the natural variations in concrete and masonry surfaces. The three stains are available in a variety of colors. For more info circle 902



CEMENT AND CONCRETE PRODUCTS / QUIKRETE

Quikrete has played a role in delivering durable, long-lasting projects for 75 years and has been a major component of new construction as well as helping to bring old projects back to life. Quikrete offers more than 200 products ranging from structural concrete and masonry mortar to water repellents and decorative finishes. With over 150 manufacturing plants, Quikrete is the largest manufacturer of pre-blended, packaged concrete and related products in North America, providing what is necessary for any concrete construction job, be it residential or commercial, big or small. For more info circle 903



PVC DECKING / KLEER

Using 100 percent PVC deckboards that are lightweight, easy to handle, and resist mold, mildew, and insects, Kleer's decking solution combines the deckboards with KleerKlip, a specially designed system that conceals fasteners within the grooved edges of the boards. The boards are designed with an embossed pattern for added traction and are available in solid colors with wood-grain patterns, and streaked colors such as Brazilian Redwood and Golden Teak. The product does not splinter and includes a 25-year stain-resistance warranty. For more info circle 904



ROOF AND WALL SHEATHING HUBER ENGINEERED WOODS

With a simple two-step installation process—just put up the panels and tape the seams—Zip System sheathing and tape from Huber Engineered Woods installs 40 percent more quickly than housewrap, the company says. The structural roof and wall system provides an integrated air and water-resistive barrier, maximizing energy efficiency and eliminating the need for housewrap. **For more info circle 905**



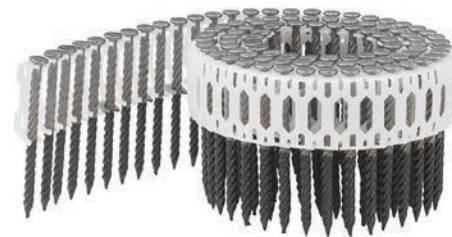
WEATHERIZATION SYSTEM / DUPONT

Thanks to its nonwoven-fiber structure that resists air filtration and water intrusion while still allowing moisture vapor to diffuse through the sheet, Tyvek HomeWrap can improve building durability by helping to prevent mold and mildew buildup and wood rot. Tyvek HomeWrap's top-rated protection can reduce home energy bills and improve occupant comfort. Backed by a 10-year limited warranty, Tyvek HomeWrap is part of the DuPont Weatherization System that also includes flashing tapes and installation accessories. **For more info circle 906**



SPRAY FOAM INSULATION / CERTAINTEED

CertaSpray X (CSX) polyurethane open-cell spray foam insulation helps stop drafts and noise while also complying with fire protection codes. Because it meets the requirements of AC377 Appendix X, CertaSpray X is suitable for installation in attics and crawlspaces without the need for an additional ignition barrier or intumescent coating, reducing the risk of callbacks and failed inspections. CSX meets ICC-ES code requirements for thermal and moisture protection, minimizes thermal bridging—saving up to 20 percent in heating and cooling costs, the manufacturer says—and can contribute to the requirements for an Energy Star home. CSX also cures to a distinctive mocha color, making it easily identifiable to building inspectors. **For more info circle 907**



FLOOR FASTENER / PASLODE

With its barbed helix design, the TetraGrip fastener from Paslode is designed to eliminate squeaky subfloors that are brought on by the use of more traditional nails. The unique design allows for the nail to drive like a nail and hold like a screw. The rotation provided by its barbed double-helix design provides superior withdrawal resistance without destruction of the wood. With less wood destruction and a better hold, the chance of squeaky subfloors is greatly reduced.

For more info circle 908



TERMITE CONTROL / NISUS

The use of penetrants and glycols allows Bora-Care to provide long-term control of termites and other wood-destroying insects and fungi. Bora-Care, from Nisus, is sprayed directly onto wood, concrete, and plumbing pipes, which limits the chemicals that can seep into waterways. The product does not corrode metal fasteners, fittings, or nails. It is less toxic than traditional pesticides, and can earn credits for LEED and other green-building certifications. **For more info circle 909**



HOUSEWRAP / TYPAR

The Typar Weather Protection System controls moisture intrusion, mitigating the damaging impacts that come with it without sacrificing comfort or energy efficiency. The Weather Protection System offers superior tear strength, air and water holdout, and moisture vapor transmission due to its polypropylene nonwoven breathable weather membrane. Essential to the whole system are the Typar Weather-Resistant barriers, which are installed before the exterior siding and act as air and moisture barriers while still allowing moisture vapor to escape from the wall cavity. Typar Housewraps are made in the U.S. and offer a lifetime warranty and can be used with a variety of claddings including brick, wood panels, vinyl siding, cedar shakes, stone, and manufactured stone. **For more info circle 910**



WATERPROOFING MEMBRANE / NOBLE CO.

Available in both 3-foot and 6-foot widths, Noble Co.'s ValueSeal Thin-Bed Bonded Waterproofing in an ultra-thin membrane for interior waterproofing of floors and walls. At 16 mils, it's the thinnest membrane offered by Noble. Thin, lightweight, and flexible, the sheet can be applied with latex-modified thinset or NobleBond EXT. ValueSeal is suitable for concrete and plywood substrates and is plumbing code approved. Made in the U.S., ValueSeal is cost-effective and comes with a 10-year warranty. **For more info circle 911**



ADHESIVE / DAP

One can of DAP SmartBond Construction Adhesive packs eight times more adhesive coverage than traditional adhesive cartridges, the company says. The product applies as foam and changes to a gel for a fast cure and high-strength bond to dimensional and treated lumber, plywood, OSB, and high-performance enhanced OSB. Application is faster as there is less gunning, less change-out, and less fatigue compared with using cartridges. The SmartBond Pro-Grade Applicator, a gun-grade option for subfloor and landscape SmartBond, offers faster application, precision, control, and maximum adhesive yield. The line includes adhesives for the subfloor, heavy-duty, landscape, and an adhesive cleaner. **For more info circle 912**



LAMINATED STRAND LUMBER WEYERHAEUSER

Trus Joist TimberStrand LSL comes in various widths, lengths, and thicknesses for load-bearing wall and roof applications. The laminated strand lumber columns and wall framing are straight, no matter the length. They resist shrinking and deliver consistent performance for the tall walls used to create entryways and two-story great rooms. Doors and windows operate more smoothly and cabinet and tile installation is easier with a stable frame as a base. **For more info circle 913**



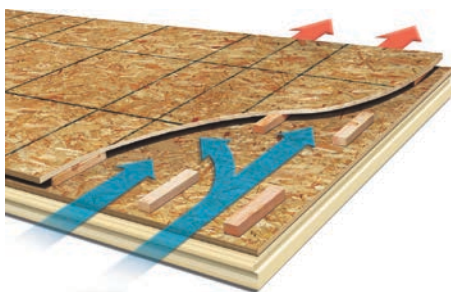
FIRE-RESISTANT GYPSUM BOARD GEORGIA-PACIFIC

ToughRock Fireguard 45 Gypsum Board is a UL-classified Type FG gypsum board for use in fire-related wall assemblies and can replace standard and lightweight gypsum board in all ½-inch wall and ceiling assemblies. These wallboards are noncombustible and are made with a dimensionally stable gypsum core specially formulated to increase the strength and resistance to the passage of heat. The core is sandwiched between face layers made of 100 percent recycled paper. In addition to its fire-resistant qualities, ToughRock also lowers sound transmission between rooms. **For more info circle 914**



HOUSEWRAP / HENRY CO.

The Henry Blueskin VP100 air barrier membrane is crucial to the company's building envelope systems. A fully adhered, peel-and-stick, water-resistant membrane, Blueskin VP100 works to eliminate air and moisture gaps around nails and other fasteners and creates improved insulation performance due to its sealing technology, in turn helping to reduce home energy costs. The membrane also helps protect against mold by limiting moisture ingress into the building. **For more info circle 915**



ROOF INSULATION / GAF

Cornell ThermaCal Nail Base Roof Insulation from GAF helps reduce heat drive into living/conditioned spaces and ventilated versions can exhaust excess moisture before it condenses in the deck or the roofing system. The panels were designed for use on structural wood or steel sloped roof decks and are perfect for cathedral ceilings, glued-laminated timber, post-and-beam structures, and conditioned attic spaces. Panels consist of sheathing that serves as the nail base for shingles, metal, slate, or tile; built-in ventilation space (a non-ventilated panel also is available) and polyiso insulation. **For more info circle 916**



WOOD SHEARWALL / SIMPSON STRONG-TIE

According to Simpson Strong-Tie, Strong-Wall SB shearwall delivers greater lateral-force-resistance performance than most comparable wood shearwalls. Strong-Wall SB is customizable—it can be field trimmed for rake walls and different heights. It fastens to headers with drill zones, and it has a chase for wiring. Suitable for applications including standard, portal, two-story stacked, balloon-framing (up to 20 feet), and rake walls, Strong-Wall SB's narrow panel widths have significantly higher allowable loads than the original Wood Strong-Wall. **For more info circle 917**



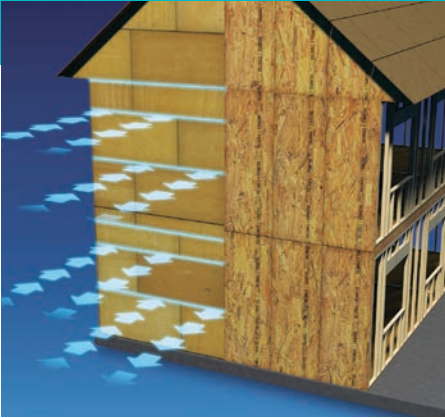
SILL PAN FLASHING / JAMSILL

Jamsill Guard, an adjustable sill pan flashing, is made from high-impact ABS plastics and is designed to prevent water damage from window and door leaks. The flashing won't deteriorate or corrode over time, the company says, and its simple design is inexpensive and easy to install. The product's multi-piece telescoping design allows on-site adjustability to fit all rough openings. It is then bonded together in the field using PVC cement, creating a one-piece sill pan flashing. Sloped weep areas help evacuate moisture to the exterior of the home. **For more info circle 918**



WEATHER BARRIER / STO

Sto's energy-efficient StoGuard fluid applied weather barrier can be sprayed on or applied with a roller and requires no special training, reducing the risk of improper installation. No additional breathing apparatus or special handling is necessary, and StoGuard does not require the use of staples, nails, or other means of attachment to adhere to the wall. Other benefits of StoGuard include the fact that it is bonded to the sheathing, does not require mechanical fastening, and will not tear, rip, or blow off during construction. **For more info circle 919**



FRAMING MATERIALS / NORBORD INDUSTRIES

MC Norbord manufactures several roofing, flooring, and wall products that improve a home's energy efficiency. Solarbord radiant barrier sheathing for roofs and exterior walls features heat-reflecting foil laminated to OSB, reducing a home's HVAC load and cooling attics by up to 30 degrees. Pinnacle, a durable subfloor panel, is produced with SFI Chain of Custody wood with no added urea formaldehyde resins. Windstorm and TallWall OSB wall sheathing reduce air leakage by up to 60 percent (when compared with using 4x8s), the company says, and work in tandem with raised-heel trusses for better R-values. **For more info circle 920**



SPRAY FOAM INSULATION / ICYNENE

Icynene's spray foam insulation products include Classic Max and Classic Plus. Classic Max is an open-cell, low-VOC foam that allows for reentry and re-occupancy two hours after installation—with active ventilation. It is also an ignition-barrier-free product that the manufacturer says can smother an attic fire in less than a minute. Classic Plus is a high R-value open-cell spray foam that achieves R-22 in 2x6 wall assemblies and may contribute toward points for new-construction LEED certification. **For more info circle 921**



DECK FASTENER / SIMPSON STRONG-TIE

The Simpson Strong-Tie DTT1Z Deck Tension Tie eliminates the need to access floor joists from inside the home and is fastened from outside the house instead. The DTT1Z addresses a new 2015 international Residential Code provision that allows four 750-pound lateral connectors to be fastened to structural framing joist members in the house, providing an alternative to using two 1,500-pound lateral connections from the deck to the floor joists within the house. Available individually or in a kit of four with four Strong-Drive SDWH Timber-Hex HDG screws and 24 Strong-Drive SD Connector screws, the DTT1Z Deck Tension Tie is a safe and time-saving alternative for attaching deck joists to a home's structural framing. **For more info circle 922**



HOUSEWRAP / TYPAR

This tri-laminate vapor-permeable woven housewrap from Typar is designed to include a spacer that creates a millimeter-size gap between sheathing and cladding. Housewrap DW provides 96 percent drainage efficiency, as measured by ASTM 2273, and exceeds AC 38 drainage specifications, the company says, providing faster drainage and drier exterior walls, which helps prevent mold and rot damage. **For more info circle 923**



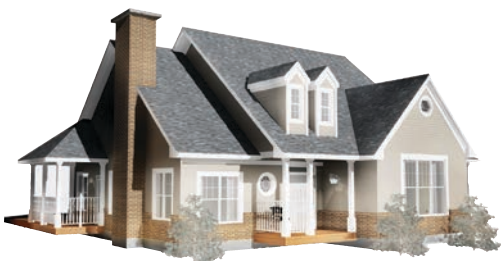
POLYURETHANE FOAMS / BASF

BASF spray polyurethane foams are helping builders meet the demand for more energy-efficient, comfortable, and durable homes. Spraytite and Evertite Spray Foam Insulation Residential Applications offer an array of benefits, from superior insulating values to a complete air barrier system. With a single installation, Spraytite closed-cell spray polyurethane foam insulation virtually eliminates uncontrolled air leakage, and Evertite open-cell spray foam can be used to improve energy efficiency or to provide a barrier against unwanted sound. It thoroughly fills spaces and adheres to surfaces creating a tighter and more seamless fit over conventional insulation. **For more info circle 924**



▲ DRYER WALL VENT / IN-O-VATE TECHNOLOGIES

Manufactured from heavy-gauge steel that's galvanized and powder coated, the Dryer Wall Vent from In-O-Vate Technologies is built for durability and won't chip, crack, or deteriorate. Its clean lines, smooth finish, and low profile don't detract from exterior aesthetics, and the vent is engineered for a quick, accurate fit. The Dryer Wall Vent exceeds all requirements for safe dryer venting, the company says, and has large, clear openings and a lighter damper, yielding lab-proven, zero back pressure, and ensuring that the termination doesn't hamper exhaust performance. **For more info circle 925**



▲ DESIGN SOFTWARE / SOFTPLAN

SoftPlan 2014 residential design software includes a 64-bit memory model and improved three-dimensional output, which allows users to generate large, detailed renderings. It offers simplified drawing commands, extensive customization tools, and advanced BIM automation. This version also contains plan sets for printing, interior elevations, and other new enhancements, and symbol libraries. SoftPlan 2014 also has SoftPlan+, a subscription service for cloud-based SoftPlan access with technical support and upgrades. **For more info circle 926**



▲ TANKLESS WATER HEATER / NAVIEN

Navien Premium Efficiency (NPE) tankless water heaters come in four output sizes, with or without built-in recirculation. NPE-A (Advanced) features ComfortFlow recirculation, with a pump and buffer tank and six pump control options. NPE-S (Standard) tops the Energy Star rating list with up to 0.99 EF (energy factor). All sizes have dual stainless steel heat exchangers and come with a 15-year residential warranty.

For more info circle 927



▲ LED SPOTLIGHTS / MR. BEAMS

Using radio frequency connectivity, multiple Mr. Beams LED Spotlights with NetBright technology can be linked into one network. The battery-operated spotlights are wireless and feature a motion sensor that turns off after 30 seconds of inactivity, making the lights ideal for security and safety applications. The spotlight gives off 200 lumens of light and each set of D-cell batteries provides up to 5,000 activations. The lights are equipped with four channels to create separate networks. Up to 50 spotlights can be connected to each channel within one NetBright network while operating at a range of 200 feet. **For more info circle 928**



▲ VENTILATION FAN / PANASONIC

For homeowners who want to replace an existing fan from below the ceiling, the Energy Star-rated WhisperFit EZ is a good option that lets users utilize the existing duct. The product is easy to install and its 5 5/8-inch housing fits most ceilings. The FV-08-11VFM5 model has a motion sensor with a 20-minute off-delay timer that activates the fan when someone enters the room. The line has a Pick-A-Flow speed selector so users can adjust the ventilation (80 or 110 cfm). **For more info circle 929**



SMART LOCK / KWIKSET

To satisfy consumer demand for both convenience and security, the Kevo smart lock by Kwikset is a Bluetooth-enabled deadbolt that gives homeowners the ability to unlock the door using their smartphone; send electronic keys (eKeys) to family, friends, and service people; and receive notifications whenever someone enters or exits the door. By simply installing Kevo and downloading the mobile app, your smartphone becomes your key. Kevo is now available on Apple iOS and select Android 5.0 Lollipop devices. **For more info circle 930**



DRYER VENT BOX / IN-O-VATE TECHNOLOGIES

In-O-Vate produces five models of recessed dryer vent box that are installed in the wall behind a dryer. The U.S.-made Dryerbox is deep-drawn and molded, made from 22-gauge aluminized steel and weighing nearly five pounds. The recessed box allows the dryer to be placed flush against the wall, which gives the laundry room more floor space. The setup also protects the exhaust hose from getting crushed by the dryer or damaged or broken during the completion of construction. **For more info circle 931**



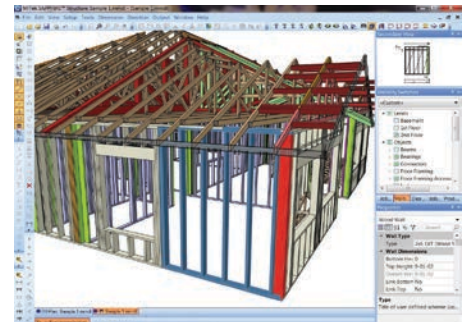
VENTILATION SYSTEMS / PANASONIC

A well-designed ventilation system saves energy, controls moisture, and improves the durability of the home. Panasonic offers a range of cost-effective ventilation solutions to help builders meet code and lower their homes' HERS Index scores, including the WhisperGreen Select, Whisper Recessed LED, EcoVent, Whisper Comfort, WhisperValue, and the Select Cyclor whole-house ventilation system (shown). **For more info circle 932**



VENTILATION FAN / PANASONIC

By incorporating a unique Veri-Boost feature to ensure optimal performance without compromising style, the EcoVent Energy Star-rated fan from Panasonic delivers airflow while offering a smaller grille size that blends into the ceiling and doesn't detract from the room's aesthetics. EcoVent provides verification assurance and can be used to comply with airflow requirements for installed performance per ASHRAE 62.2 and Energy Star for Homes 3.0, among others. **For more info circle 933**



3-D SOFTWARE / MITEK

MiTek's Sapphire software allows users to create 3-D models to collaboratively manage the design-and-estimating processes and create buildable homes with predictable costs. Using Sapphire Structure's 3-D modeling, builders can design, optimize, and build a structure, while improving cycle time, efficiency, and the bottom line. Files can be shared with customers, improving the communication of the design process. Sapphire Viewer is used to review models in Plan and 3-D views, isolate items in the model, examine elevation drawings, and print layout sheets. **For more info circle 934**



TANKLESS WATER HEATER / RINNAI

Rinnai expanded the Ultra Series line of condensing tankless water heaters with the RUR98i and RUR98e. These RUR models feature recirculation, with or without a dedicated recirculation line. Recirculation, which shortens the wait time for hot water, is provided by thermal bypass technology that includes an integrated pump, internal bypass line, and thermal bypass valve. **For more info circle 935**



WIRING ENCLOSURES AND OUTLETS / ICC

ICC is a manufacturer of residential and commercial copper and fiber structured cabling products such as wiring enclosures and outlets. The 30-year-old company's midrange products designed for condos, town homes, and single-family production-built houses include wiring enclosure combos, each with eight phone ports, six video ports, eight Category 6 data ports (model K), a door or cover, and mounting hardware. **For more info circle 936**



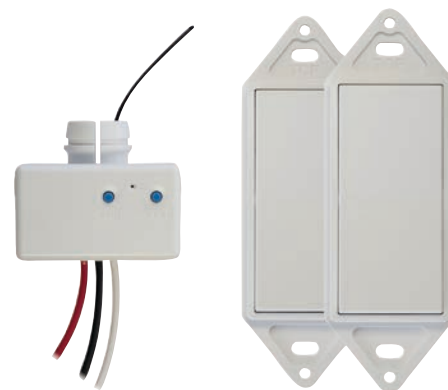
WIRELESS CHARGING SURFACE / DUPONT

The Corian Charging Surface in select versions of DuPont countertops charges a mobile phone or tablet using a transmitter under the countertop. By wirelessly transferring energy to a receiver within or attached to the smart device, users simply place their mobile device on the charging spot to commence charging. Nearly all smart devices can be charged with a charging ring from Duracell Powermat, but charging cases also are available, and some devices already have wireless charging capability built in. Local distributors can be found at corian.com/powerup. **For more info circle 937**



LED LIGHTING / GE

The Bright Stik LED is a sleek new shape in LED lighting that consumers can enjoy at an affordable \$4 per bulb. The Bright Stik offers a 15,000-hour rated life and, says the manufacturer, lasts 50 percent longer while using 20 percent less energy than compact fluorescent bulbs, and lasts 15 percent longer and uses 80 percent less energy than incandescent/halogen bulbs. Bright Stik is available with a CRI rating of 80 and a color temperature of 2,850K, and does not contain lead or mercury. **For more info circle 938**



WIRELESS SWITCH / GOCONEX

Because it isn't physically attached to a home's structure, GoConex's wireless electrical switch is faster and simpler to install and provides added flexibility in where the switch can be installed. The lack of wires means that a switch can be moved without the need to touch wires or cut drywall. The wireless switch reduces building-material and vapor-barrier penetrations and also provides users with the option of controlling one or multiple switches from any GoConex wireless switch. **For more info circle 939**



VENTILATION FAN / PANASONIC

The WhisperGreen Select ventilation fan from Panasonic includes several features that allow for greater customization and easier installation: the built-in Pick-A-Flow speed selector lets users choose the amount of airflow (50, 80, or 110 cfm); Plug 'N Play modules help installers comply with the latest codes by providing up to three extra features they can pick from to meet a variety of ventilation applications; an installation bracket with articulating joints allows the fan to be precisely positioned; and SmartFlow technology senses the amount of resistance in the duct run, automatically adjusting the fan speed to deliver optimal cfm output. **For more info circle 940**



LED FAN / PANASONIC

Panasonic's Energy Star-certified WhisperRecessed LED fan is UL listed for tub/shower enclosures and offers quiet operation. The 80 cfm fan exhausts indoor moisture, pollutants, and allergens while its recessed adjustable LED bulb's positioning and deeper lamp regression minimize glare. The warm-white dimmable LED lamp lasts up to five times longer than CFLs and uses up to 20 percent less energy. A built-in damper prevents backdraft. **For more info circle 941**



TANKLESS WATER HEATER / NORITZ

The NRCP line of residential tankless water heaters from Noritz has a circulating pump inside. This setup keeps hot water close to the outlet, which minimizes the wait for warm or hot water and the waste of unused potable water. The recirculation system can be programmed to operate only when needed via a digital display on the front of the water heater. The auto setting lets the system learn the household's water-usage routines so it can automatically control the recirculation loop activation times. **For more info circle 942**



SMART-HOME PRODUCTS / NEST

Nest is recruiting Nest Pros by offering training, tools, and professional pricing to those interested in selling and installing products such as the 3rd Generation Nest Learning Thermostat. The portfolio also includes the Nest Protect, a smoke and carbon monoxide alarm that speaks when there is a problem and sends alerts to a resident's phone via the Nest app if they're not home, and Nest Cam, a tripod-mount-with-magnet security camera with 24/7 live streaming night vision, digital zoom, and motion and sound detection that sends alerts to the homeowner's phone. **For more info circle 943**



GARAGE DOOR OPENER / LIFTMASTER

The MyQ-enabled garage door opener gives users the ability to control a door from anywhere with a smartphone, tablet, or computer via the free MyQ app. The garage door openers include battery backup and a quiet DC motor belt-drive system. The system gives home builders upsell opportunities and improved reliability, cutting down on callbacks. **For more info circle 944**



▲ CARGO VAN / MERCEDES-BENZ

The 2015 Sprinter Cargo Van has two engine/transmission combinations from which to choose: the standard powertrain OM651 4-cylinder with 7-speed 7G-Tronic transmission, and the OM642 V6 with 5-speed transmission. The OM651 delivers up to 18 percent better fuel economy over the 6-cylinder/5-speed combo, according to the company. Both engines run clean due to Mercedes' BlueTEC SCR technology, which features a fuel-economy rear axle for optimized gearing and a regulated fuel pump to optimize fuel supply. A Sprinter 4x4 cargo van is also available. **For more info circle 945**



▲ DRILL BITS / IRWIN

Irwin's Double-Ended Power Bits offer convenience and improved driving functionality. Two ends save builders from searching for replacement bits between applications. DoubleLok Technology securely locks both ends of the bit into impact drivers and quick-change chucks. A snug fastening reduces stripping and cam-out, which lengthens the life of the bit. Like the single-ended options, the double-ended bits are compatible with Irwin's Magnetic Screw-Hold Attachment that holds fasteners with a powerful rare-earth magnet. **For more info circle 946**



▲ VEHICLES / FORD

The 2015 Ford Transit has multiple configurations, including two wheelbases, three body lengths, and three roof heights. Van, wagon, chassis cab, and cutaway body styles are also options. The Transit has three engines to choose from, starting with the base 3.7-liter V6, as well as an EcoBoost twin-turbo gas V6 and a 5-cylinder diesel. It has higher fuel economy ratings than previous full-size vans. The voice-activated SYNC connects users with their phones for hands-free calling. The interior has three rows of seating and hundreds of cubic feet of space, depending on the configuration. Ford can customize the Transit for nearly any building or technical trade. **For more info circle 947**



▲ SAW BLADE / LENOX

Lenox Gold Power Arc Curved Reciprocating Saw Blades last twice as long as traditional straight recip blades, the company says, in part due to a titanium coating that better dissipates heat from friction. The coating also allows the blades' teeth to stay sharper for longer. The blades are angled so that they provide faster cutting through materials such as wood, metal, heavy metal, demolition, and nail-embedded wood. **For more info circle 948**



▲ DRYWALL TOOL / CALCULATED INDUSTRIES

The Blind Mark XT Magnetic Drywall Cutout Tool from Calculated Industries makes it easy to locate and cut electrical outlet access holes in drywall, plywood, exterior siding, and other materials. The process requires no measuring. First put a target magnet in the outlet, then install the drywall. Place the locator magnet above the outlet and trace around it to know what to cut. The simple tool saves on time and lifting and lowering drywall sheets to mark, cut, and install. **For more info circle 949**



▲ CUTTING PLIERS / IRWIN

Irwin Vise-Grip Max Leverage Diagonal Pliers feature PowerSlot Technology, which provides up to twice the cutting power with half the effort. Three-zone comfort grips give cushion and allow for more control, and the handles have hooks that attach to the Irwin Performance Lanyard. The pliers, designed for electricians and general construction workers, can cut through nails, screws, ACSR cable, and even piano wire. They have a rust-resistant finish and are available in a 7-inch and 8-inch size. **For more info circle 950**